



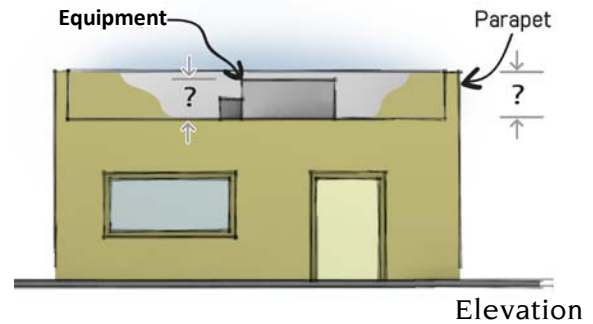
Roof-Mounted Equipment Screening

Planning Services Division

City Code requires that roof-mounted mechanical equipment be screened from public view. Roof-mounted equipment includes air conditioners, compressors, condensers, conduits, pipes, vents, ducts, etc. Prior to issuing a building permit for roof-mounted equipment, your plans will need to document one of the following three screening methods. Please note that all required diagrams, site plans, and line-of-site profiles must be drawn to scale.

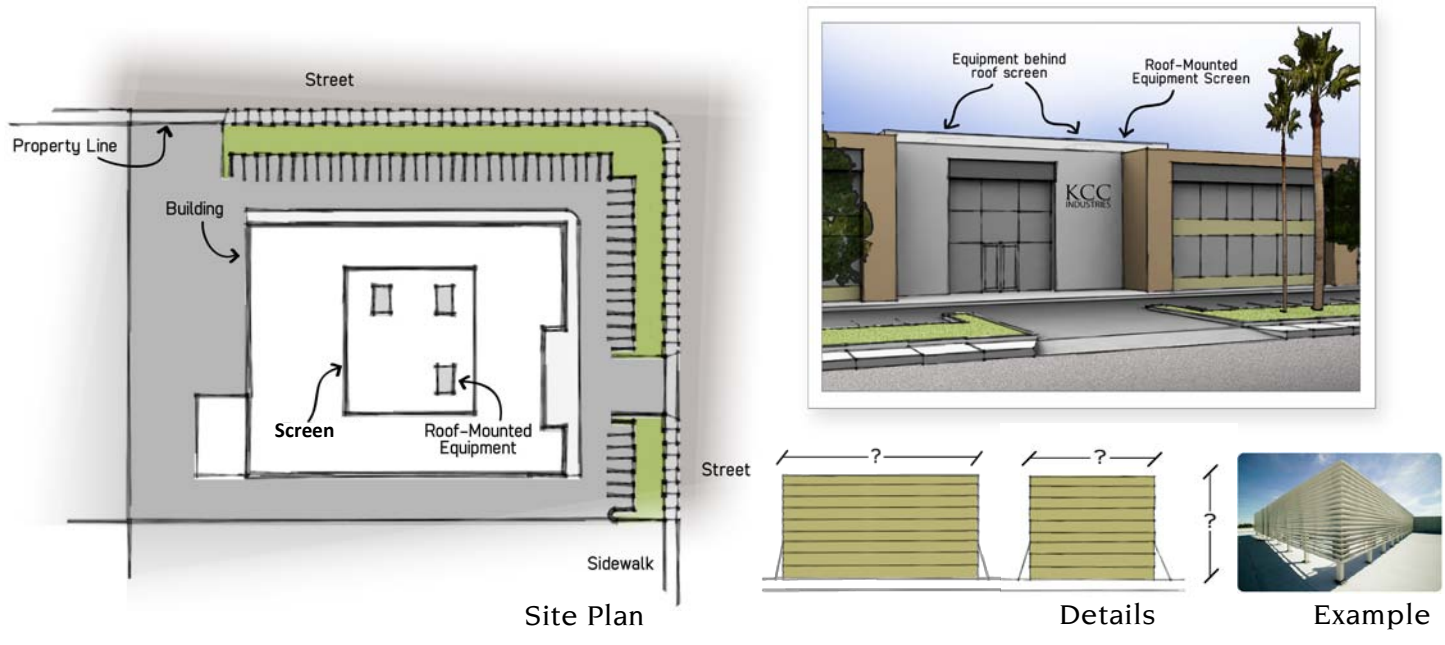
OPTION 1: Equipment Below Parapet

Provide plans that demonstrate the roof-mounted equipment is located below the parapet for all four sides of the building, as demonstrated below:



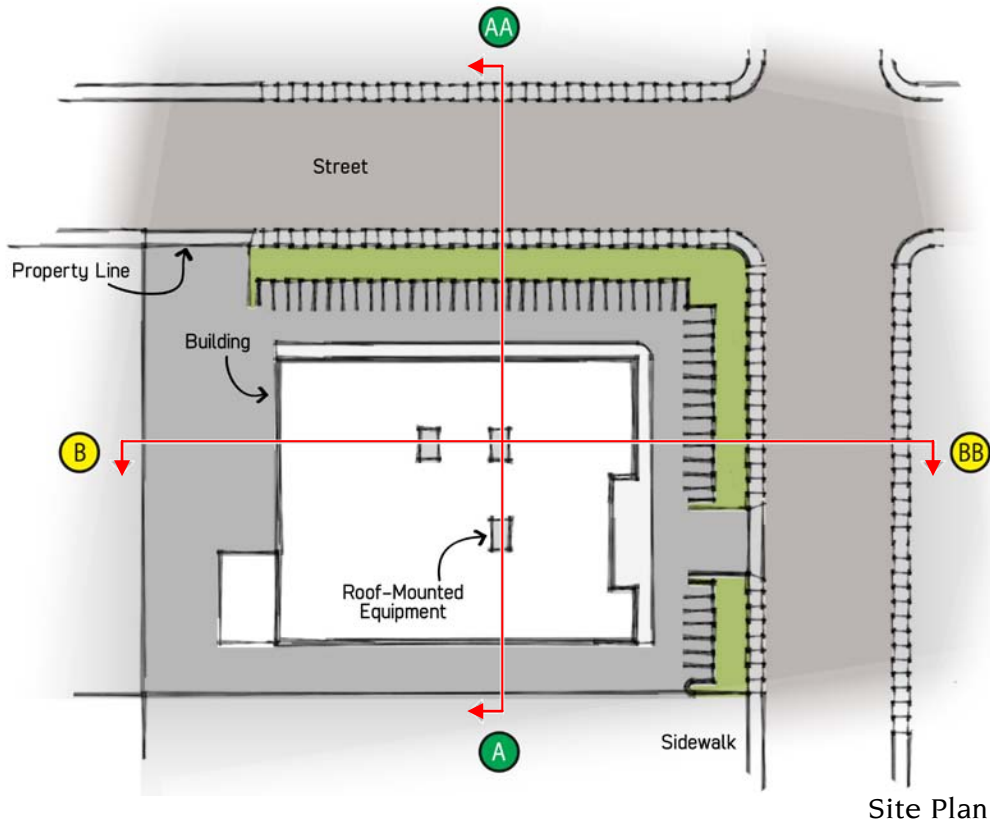
OPTION 2: Architectural Screening

Provide plans that demonstrate the equipment will be screened by an architectural screen element similar in design and color to the underlying building. Wood lattice cannot be used as a screening device. One option is to utilize a pre-manufactured screening device (see example).

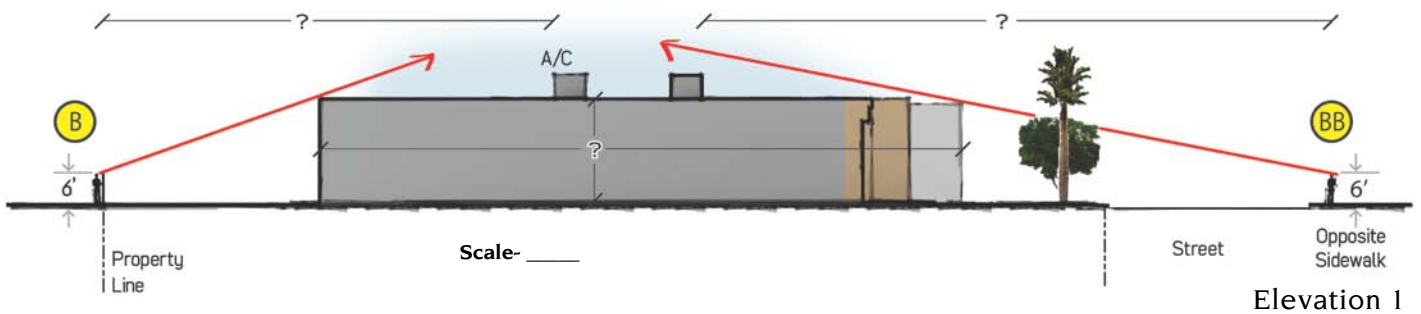


OPTION 3: Provide a Line-of-Sight Diagram

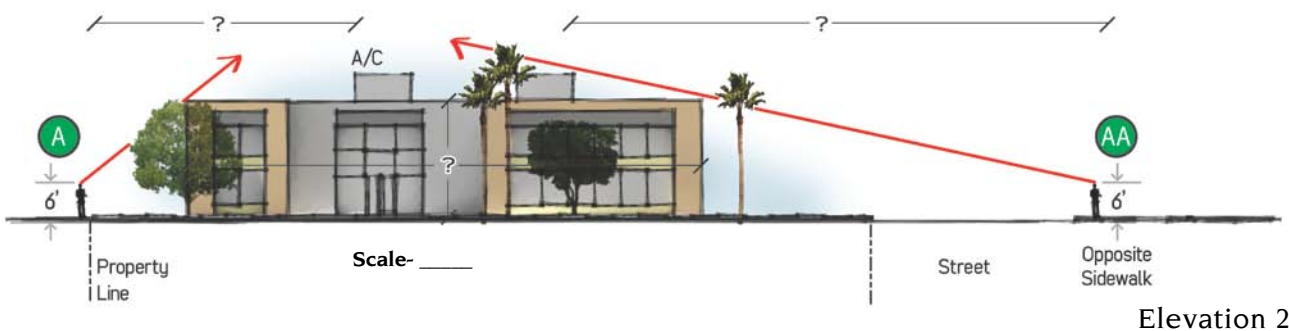
Provide a line-of-sight diagram that demonstrates the proposed roof-mounted equipment will not be visible from any adjacent property, as seen from a point six (6) feet above ground level at the property line (or sidewalk on the opposite side of the street).



Site Plan



Elevation 1



Elevation 2