

# City of Anaheim Department of Public Works-Engineering Street Improvement/Grading Plans Search Procedure

Visit [www.anaheim.net/records](http://www.anaheim.net/records)

To begin your research you will need information for at least one field for Grading and/or Street Improvement plans. To narrow your search, you may fill in more than one field.

### Grading Plans

District (3 DIGITS)	<input type="text"/>
Grading Plan Number (5 DIGITS)	<input type="text"/>
Year	<input type="text"/>
House Number	<input type="text"/>
Street	<input type="text"/>
Tract Number (5 DIGITS)	<input type="text"/>
Grading Plan Type	<input type="text"/>
Vault	<input type="text"/>
Notes	<input type="text"/>

Grading Plan Type	<input type="text"/>
Vault	<input type="text"/>
Notes	<input type="text"/>
<input type="button" value="Search"/>	

Final  
Mass  
Minor  
Precise  
Remedial  
Rough

### Street Improvement Plans by plan type or all inclusive

Menu Number	<input type="text"/>
District	<input type="text"/>
Improvement Plan Number	<input type="text"/>
RCP Number	<input type="text"/>
Tract Number	<input type="text"/>
Improvement Plan Type	<input type="text"/>
Street	<input type="text"/>
Cross Street	<input type="text"/>
Direction	<input type="text"/>

District (3 DIGITS)	<input type="text"/>
Improvement Plan Number	<input type="text"/>
RCP Number (5 DIGITS)	<input type="text"/>
Tract Number (6 DIGITS)	<input type="text"/>
Improvement Plan Type	<input type="text"/>
Street	<input type="text"/>
Cross Street	<input type="text"/>
Direction	<input type="text"/>

Detail	<input type="text"/>
Index	<input type="text"/>
Interconnect	<input type="text"/>
Irrigation	<input type="text"/>
Landscape	<input type="text"/>
Lateral	<input type="text"/>
Lighting	<input type="text"/>
Median	<input type="text"/>
Planting	<input type="text"/>
Private	<input type="text"/>
Profile	<input type="text"/>
Pump	<input type="text"/>
Quantities	<input type="text"/>
RC Box	<input type="text"/>
Realignment, Phase II	<input type="text"/>
Signal	<input type="text"/>
Signing	<input type="text"/>
Striping	<input type="text"/>
Title	<input type="text"/>
Traffic	<input type="text"/>

Your search will populate several possible documents. **Select one** to view the document. To view in a larger format, print or save a copy, **click on the printer icon named PDF**. Pages to print as you desire or all, then **click Download & Print**.

Results 11 - 20 of 163

[02694](#)

District: 145, 150 - Grading Plan Number: 02694 - Year: 20  
PALMA AVE, E. LA PALMA AVE, E. LA PALMA AVE - Gradi

[02664](#)

District: 045 - Grading Plan Number: 02664 - Year: 2

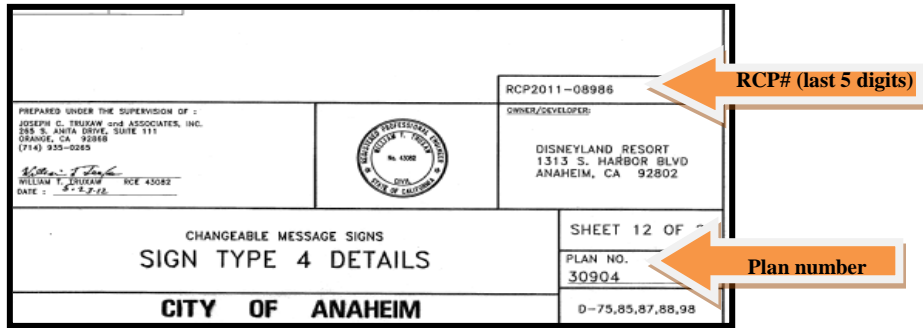
1 7/4 Go PDF

**Print**

Pages to Print: [ 1 , 4 ]  
Enter page numbers and/or page ranges separated by commas.  
For example, 1,3,5-12.

After downloading, print the document using a PDF reader (e.g. Adobe Acrobat).

**RCP & Plan Number** – The RCP number is not on all plans. It may also be called the SP Number. This is typically found in the title block above the plan number as well as the Plan number. When you search via RCP number the search will populate all documents associated with this permit.



**How to locate the District Number**– If you do not have this information to search and know the district you are interested in; go to:

- <http://gis.anaheim.net/citykeymap.pdf> (you can zoom in to the area of Anaheim you are researching and find the district number (pink #))

or

- <http://gis.anaheim.net/ParcelInfo/Disclaimer.aspx> (type in address)

