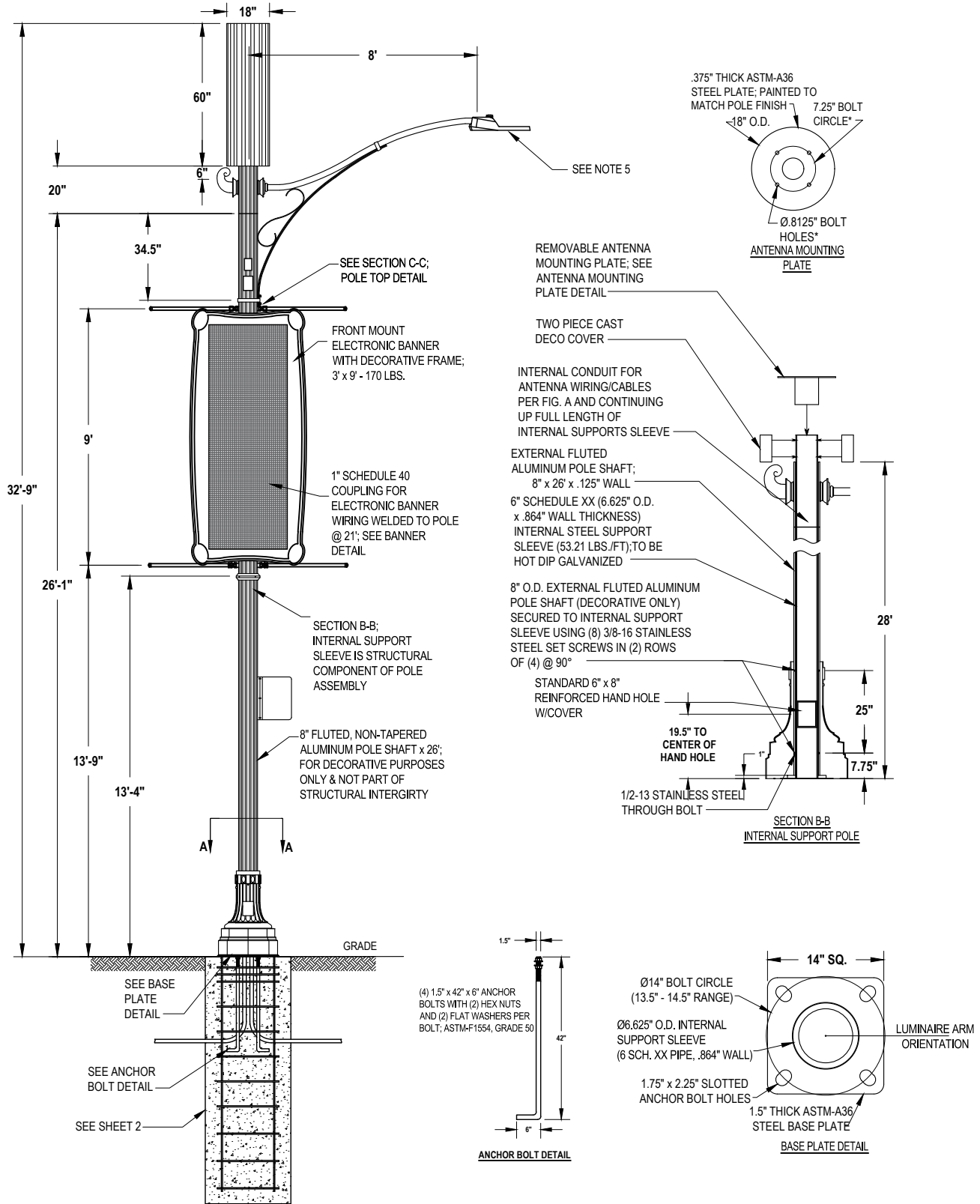


**SCOPE: THIS STANDARD SHOWS CITY OF ANAHEIM STREET LIGHT DESIGN #744 - FOR INSTALLATION OF CELL SITE ON TOP OF STREETLIGHT POLE WITH ELECTRONIC BANNER FOR ANAHEIM RESORT AREA.**



FILENAME: L147 REV 0

<b>CITY OF ANAHEIM</b> PUBLIC UTILITIES DEPARTMENT ELECTRICAL DIVISION T&D CONSTRUCTION STANDARDS				
APPROVALS				
SR ELEC ENG.	T&D MGR	SYS PLN MGR	OPS MGR	SUB MAINT
Ry	EB	N/A	DA	N/A

REVISION KEYS: ADDED / REVISED TEXT ADDED / REVISED MATERIAL

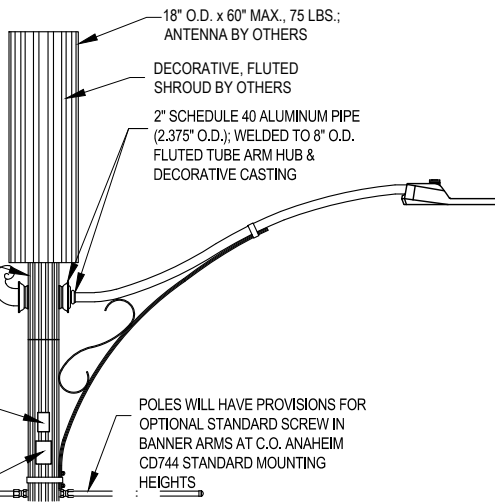
**CITY OF ANAHEIM**  
**STREET LIGHT DESIGN #744**  
**CELL SITE TOP**

NEW SHEET	NEW SHEET
REVISION NO. 0	
ISSUE DATE: 12-17-19	
SHEET 1 OF 4	
CONSTRUCTION STANDARD:	
<b>L 147</b>	

SEPARATE ARM ASSEMBLY; CENTER HUB IS SAME TUBING AS DECORATIVE POLE SHAFT; CAST COMPONENTS & ARM TUBE WELDED TO CENTER ARM HUB; ROTATABLE FULL 360°; SECURED TO 6" SCHEDULE XX INTERNAL SUPPORT SLEEVE USING (8) 3/8-16 STAINLESS STEEL SET SCREWS IN (2) OFF SET ROWS OF (4) @ 90° & (1) Ø0.5" THROUGH BOLT

2" x 4" OPENING W/COVER PLATE FOR DISCONNECT SWITCH; LOCATED OUTSIDE OF MINIMUM RF APPROACH DISTANCE (IF ANY) PER CITY SPECIFICATIONS

SIGN TO INDICATE "24 HOUR POLE REPLACEMENT AVAILABLE UPON DOWNED POLE" WITH APPLICABLE CONTACT INFORMATION PROVIDED



**SECTION C-C  
POLE TOP DETAIL**

DECORATIVE ASTM-A356 CASTING, NON-STRUCTURAL, WELDED TO ALUMINUM TUBE

1/2-13 STAINLESS STEEL THROUGH BOLT

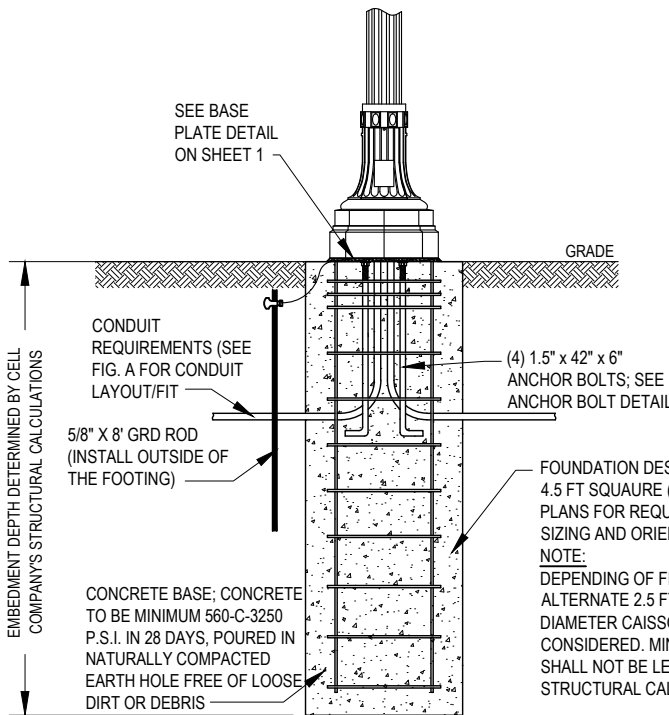
8" O.D. EXTERNAL FLUTED ALUMINUM POLE SHAFT (DECORATIVE ONLY) SECURED TO INTERNAL SUPPORT SLEEVE USING (8) 3/8-16 STAINLESS STEEL SET SCREWS IN (2) ROWS OF (4) @ 90°

DECORATIVE 8" O.D. EXTERNAL FLUTED TUBING

INTERNAL 6" SCHEDULE XX SUPPORT SLEEVE CONTINUES PAST TOP OF OUTER DECO TUBING AND SERVES AS MOUNTING TENON FOR ARM ASSEMBLY

**ARM MOUNTING DETAIL**

SEE BASE PLATE DETAIL ON SHEET 1

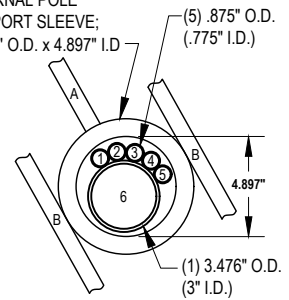


**SECTION A-A  
FOUNDATION DETAILS**

A - STREET LIGHT MAST ARM  
B - ELECTRONIC BANNER

- 1 - COA/POWER TO LUMINAIRE MAST ARM
- 2 - COA/FIBER TO MAST ARM "SMART CITY"
- 3 - POWER TO WIRELESS COMPANY DISCONNECT SWITCH
- 4 - COA/POWER TO ELECTRONIC BANNER
- 5 - COA/FIBER TO ELECTRONIC BANNER
- 6 - FIBER/COAXIAL TO WIRELESS COMPANY ANTENNA

INTERNAL POLE SUPPORT SLEEVE;  
6.625" O.D. x 4.897" I.D.



**FIG. A**

FOUNDATION DESIGN (BY OTHERS):  
4.5 FT SQUARE (TYP.) - SEE PROJECT PLANS FOR REQUIRED DEPT, CONDUIT SIZING AND ORIENTATIONS REQUIRED.

NOTE:  
DEPENDING OF FIELD CONDITIONS, ALTERNATE 2.5 FT SQUARE & 2.5 FT DIAMETER CAISSON (TYP.) WILL ALSO BE CONSIDERED. MINIMUM EMBEDMENT SHALL NOT BE LESS THAN 8 FEET SUBMIT STRUCTURAL CALCULATION FOR REVIEW

FILENAME: L147 REV 0

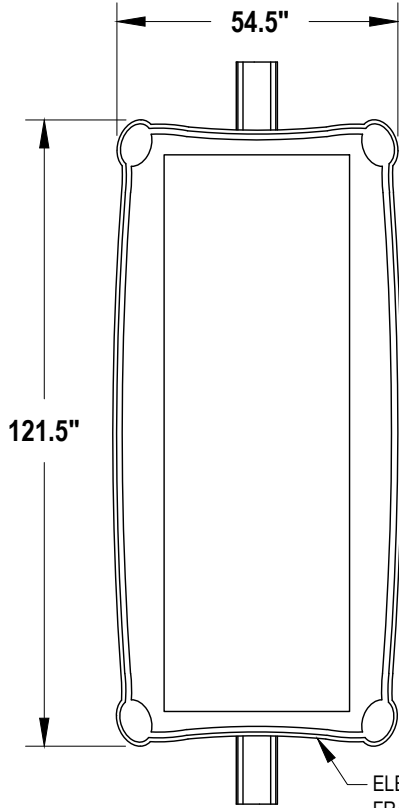
<b>CITY OF ANAHEIM</b> PUBLIC UTILITIES DEPARTMENT ELECTRICAL DIVISION T&D CONSTRUCTION STANDARDS				
APPROVALS				
SR ELEC ENG.	T&D MGR	SYS PLN MGR	OPS MGR	SUB MAINT
Ry	EB	N/A	DA	N/A

REVISION KEYS: ADDED / REVISED TEXT ADDED / REVISED MATERIAL

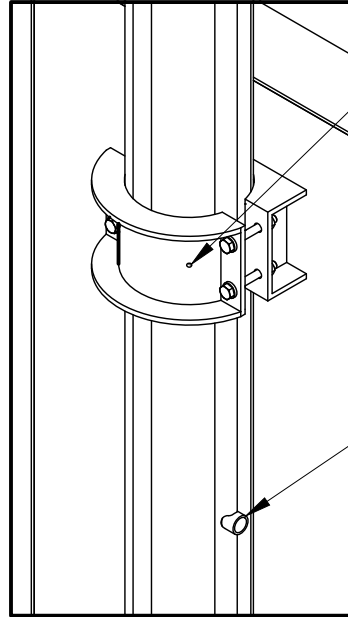
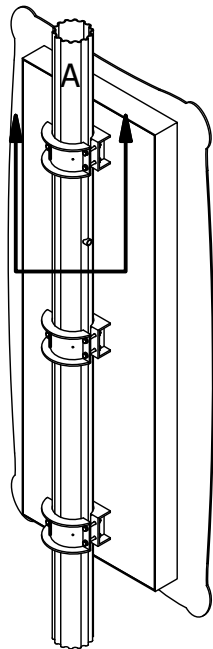
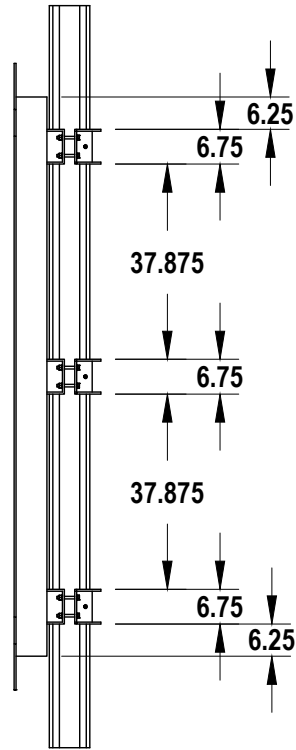
**CITY OF ANAHEIM  
STREET LIGHT DESIGN #744  
CELL SITE TOP**

NEW SHEET	NEW SHEET
REVISION NO.	0
ISSUE DATE:	12-17-19
SHEET	2 OF 4
CONSTRUCTION STANDARD:	
L 147	

FILENAME: L147 REV 0



ELECTRONIC BANNER SIGN  
FRAME; STYLE & FINISH PAINT  
TO MATCH EXISTING SIGN  
FRAMES



(3) STEEL MOUNTING BRACKETS  
CONNECTED TO ELECTRONIC  
BANNER AND CLAMPED AROUND  
POLE SHAFT USING (4) 1/2-13 x 4  
STAINLESS STEEL HEX HEAD BOLTS  
WITH (1) HEX NUT & (2) FLAT  
WASHERS PER BOLT; EACH BRACKET  
TO ALSO HAVE (2) 3/8-16 SQUARE  
HEAD SET SCREWS TO PREVENT  
SLIPPAGE DOWN THE POLE SHAFT

1 SCHEDULE 40 COUPLING  
FOR EXTERNAL WIRING;  
CAPPED IF NOT REQUIRED

ELECTRONIC BANNER  
MOUNTING DETAIL  
**DETAIL A**

<b>CITY OF ANAHEIM</b> PUBLIC UTILITIES DEPARTMENT ELECTRICAL DIVISION T&D CONSTRUCTION STANDARDS				
APPROVALS				
SR ELEC ENG.	T&D MGR	SYS PLN MGR	OPS MGR	SUB MAINT
Ry	EB	N/A	DA	N/A

REVISION KEYS: ADDED / REVISED TEXT ADDED / REVISED MATERIAL

**CITY OF ANAHEIM**  
**STREET LIGHT DESIGN #744**  
**CELL SITE TOP**

NEW SHEET	NEW SHEET
REVISION NO.	0
ISSUE DATE:	12-17-19
SHEET	3 OF 4
CONSTRUCTION STANDARD:	
L 147	

NOTES:

1. STEEL TO BE HIGH TENSILE STRENGTH. CAST ALUMINUM TO BE 319 ALLOY OR AS SPECIFIED.
2. ALL FASTENERS TO BE STAINLESS STEEL .
3. BASE PLATE REFER TO SHEET 1 FOR DETAILS.
4. FOR COMPLETE POLE UNIT WITHOUT THE LUMINAIRE , ORDER SOUTH COAST LIGHTING & DESIGN PART # CD744ANT-ELECBAN-FM-REV N. FOR ARM ONLY #CDPAV-1-8-ANT. VENDORS TO ORDER INCLUDE SOUTH COAST LIGHTING, ONE SOURCE, AND HD-SUPPLY.
5. FOR COMPLETE LUMINAIRE UNIT WITH SET SCREWS TO ATTACH TO THE ARM, STOCK CODES LISTED PER TABLE. LUMINAIRE TO BE SUPPLIED BY CITY.
6. WIRING FOR LUMINAIRE SHALL BE #14 COPPER CABLES WITH XHHW-2 INSULATION (BLACK-PHASE, WHITE-NEUTRAL, GREEN-GROUND) IN 3/4" CONDUIT FROM POLE BASE TO LUMINAIRE.
7. THE POLE DEPICTED IS DESIGNED TO WITHSTAND LOADS IMPARTED BY A CYLINDRICAL 18" DIA. X 60 " TALL ANTENNA SHROUD. THE TOP MOUNT LMA AND THE LUMINAIRE PER 2016 CALIFORNIA BUILDING CODE ASCE 7-10 & 2015 AASHTO IN A 115 MPH WIND ZONE (3-SECOND GUSTS) . POLE CHECKED AGAINST LOCATION SPECIFIC SEISMIC CRITERIA. PLEASE ADVISE CITY IF INTENDED LOADING EXCEEDS THESE VALUES.
8. ANTENNA POWER SHUT OFF SWITCH FURNISHED AND INSTALLED BY WIRELESS COMPANY. DISCONNECT MOUNTING PROVISION BY OTHERS.
9. POLE CONDUITS SHALL BE SEPARATE AND NOT SHARED WITH ELECTRIC UTILITY. SEE FIG. A. ON SHEET 2.
10. STRUCTURAL STAMPED DRAWINGS TO BE SUBMITTED BY WIRELESS COMPANY TO C.O.A. STANDARDS SUPPORTING 115 MPH LOADING CRITERIA FOR POLE, BASEPLATE AND FOOTING WITH ALL ATTACHMENTS.
11. SEE CO 192 FOR BANNER ATTACHMENT. (NON-ELECTRONIC BANNER)
12. COA TO PROVIDE 120V POSITION IN HAND HOLE WIRELESS COMPANY TO INSTALL MULTI/AUTO REG. EQUIP. UTILITY TO PROVIDE 20 AMP. MAX IN-LINE FUSE.
13. FUSING SHALL BE PER COA L104.
14. FOOTING (FOUNDATION) CONCRETE MIX SHALL BE MINIMUM OF 560-C-3250.
15. DESIGNER SHALL USE APPROPRIATE PHOTOMETRIC SOFTWARE TO CONFIRM IES GUIDELINES ARE FOLLOWED PRIOR TO STREETLIGHT INSTALLATION.

ITEM	QTY	DESCRIPTION	IDENTIFICATION OR CAT. NO.	ANAHEIM STOCK CODE	COMPATIBLE UNITS
1	1	POLE AND ANCHOR BOLTS	CD744-ANT-ELECBAN-FM-REV N		
	1	SINGLE ARM	CDPAV-1-8-ANT		
3	1	LUMINAIRE 400W EQ.-120/208/240/277	SEE STOCK CODE	474277	L400LED-P7
4	1	LUMINAIRE 250W EQ.-120/208/240/277	SEE STOCK CODE	474247	L250LED-P7
5	1	LUMINAIRE 200W EQ.-120/208/240/277	SEE STOCK CODE	474241	L200LED-P7

FILENAME: L147 REV 0

<b>CITY OF ANAHEIM</b> PUBLIC UTILITIES DEPARTMENT ELECTRICAL DIVISION T&D CONSTRUCTION STANDARDS	REVISION KEYS:	 ADDED / REVISED TEXT	 ADDED / REVISED MATERIAL	NEW SHEET	NEW SHEET										
	<b>CITY OF ANAHEIM</b> <b>STREET LIGHT DESIGN #744</b> <b>CELL SITE TOP</b>				REVISION NO. <b>0</b>	ISSUE DATE: <b>12-17-19</b>									
	APPROVALS <table border="1"> <tr> <td>SR ELEC ENG.</td> <td>T&amp;D MGR</td> <td>SYS PLN MGR</td> <td>OPS MGR</td> <td>SUB MAINT</td> </tr> <tr> <td>Ry</td> <td>EB</td> <td>N/A</td> <td>DA</td> <td>N/A</td> </tr> </table>				SR ELEC ENG.	T&D MGR	SYS PLN MGR	OPS MGR	SUB MAINT	Ry	EB	N/A	DA	N/A	SHEET <b>4</b> OF <b>4</b>
SR ELEC ENG.	T&D MGR	SYS PLN MGR	OPS MGR	SUB MAINT											
Ry	EB	N/A	DA	N/A											