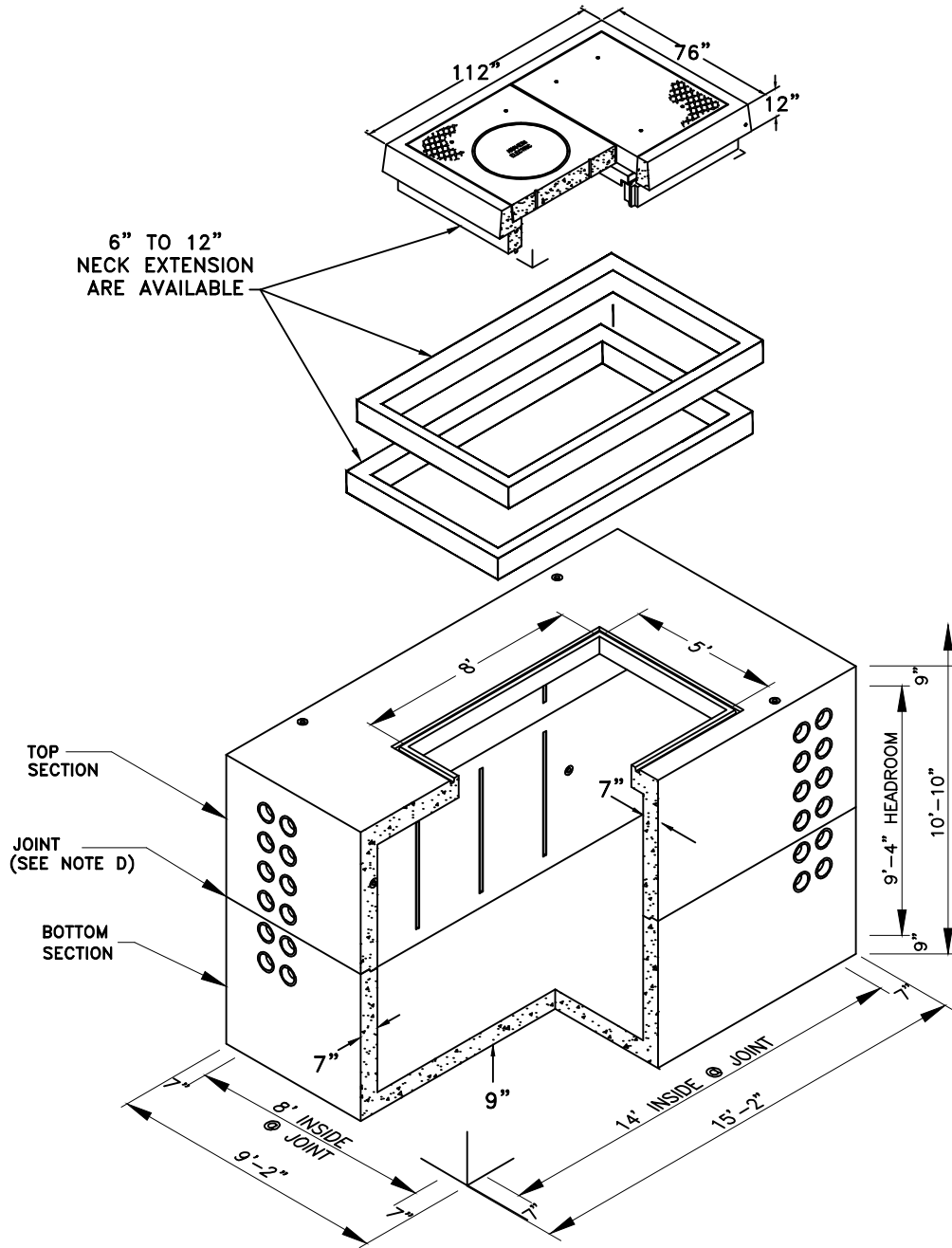


SCOPE: THIS STANDARD SHOWS DETAILS OF 8' x 14' x 9'-4" DISTRIBUTION VAULT, TRAFFIC INSTALLED, WITH 5' X 8' OPENING FOR EASE OF SWITCH ASSEMBLY OUTSIDE THE VAULT.



| VAULT LOCATION | STYLE | JENSEN CAT. NO.    | UTILITY VAULT CAT. NO. | ANAHEIM CU. NO. |
|----------------|-------|--------------------|------------------------|-----------------|
| TRAFFIC        | TUB   | K814-FV112-163F-58 |                        | VBX14CONTX      |

FILENAME: CU1600-3K REV2

**CITY OF ANAHEIM**  
PUBLIC UTILITIES DEPARTMENT  
ELECTRICAL DIVISION  
T&D CONSTRUCTION STANDARDS

| APPROVALS |         |             |         |           |
|-----------|---------|-------------|---------|-----------|
| PREP BY   | T&D MGR | SYSP LN MGR | OPS MGR | SUB MAINT |
| MH        | EB      | -           | CM      | -         |

REVISION KEYS:

ADDED / REVISED TEXT

ADDED / REVISED MATERIAL

NEW SHEET

**DISTRIBUTION VAULT**  
**8' x 14' x 9'-4" DEEP TRAFFIC FLAT WALL**  
**WITH 5' x 8' OPENING**

REVISION NO. **2**

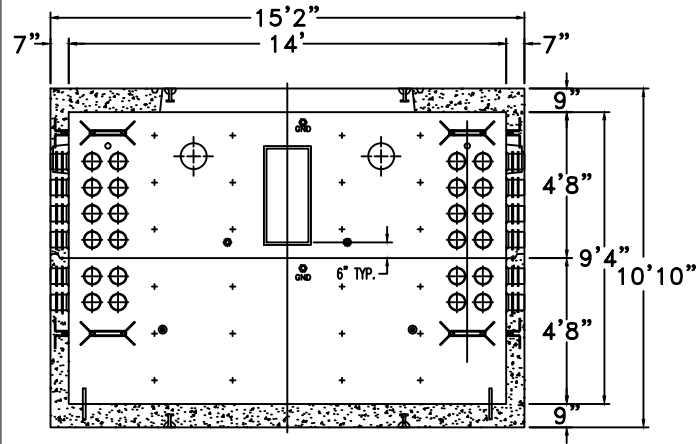
ISSUE DATE: **01-13**

SHEET **1** OF **6**

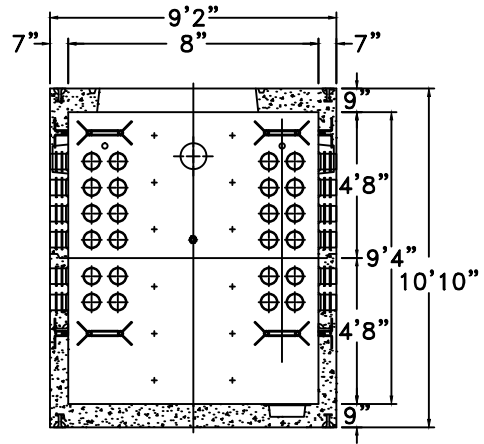
CONSTRUCTION STANDARD:

**CU 1600-3K**

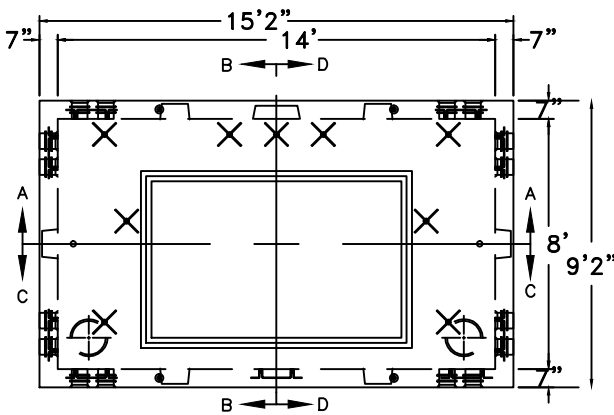
FILENAME: CU1600-3K REV2



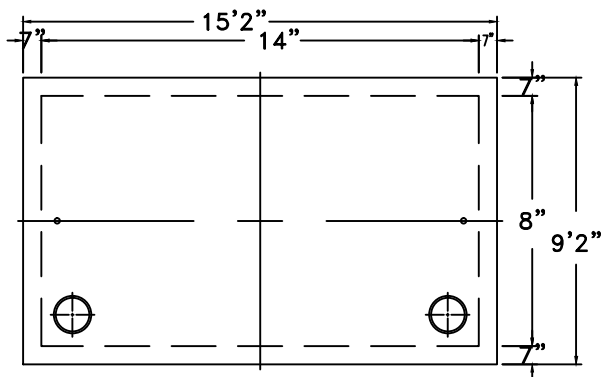
SECTION A-A



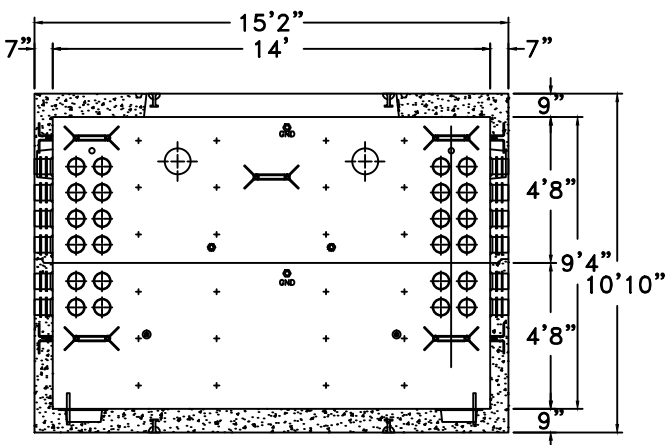
SECTION B-B



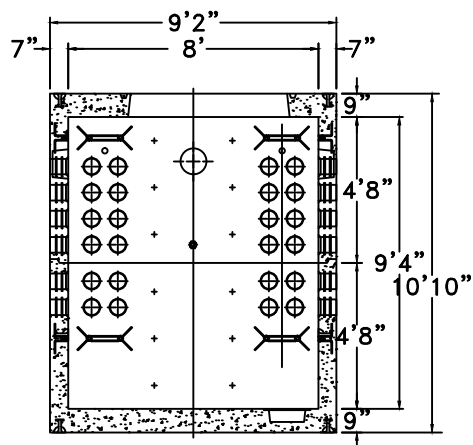
PLAN VIEW



FLOOR PLAN VIEW



SECTION C-C



SECTION D-D

**CITY OF ANAHEIM**  
PUBLIC UTILITIES DEPARTMENT  
ELECTRICAL DIVISION  
T&D CONSTRUCTION STANDARDS

| APPROVALS |         |             |         |           |
|-----------|---------|-------------|---------|-----------|
| PREP BY   | T&D MGR | SYS PLN MGR | OPS MGR | SUB MAINT |
| MH        | EB      | -           | CM      | -         |

REVISION KEYS:

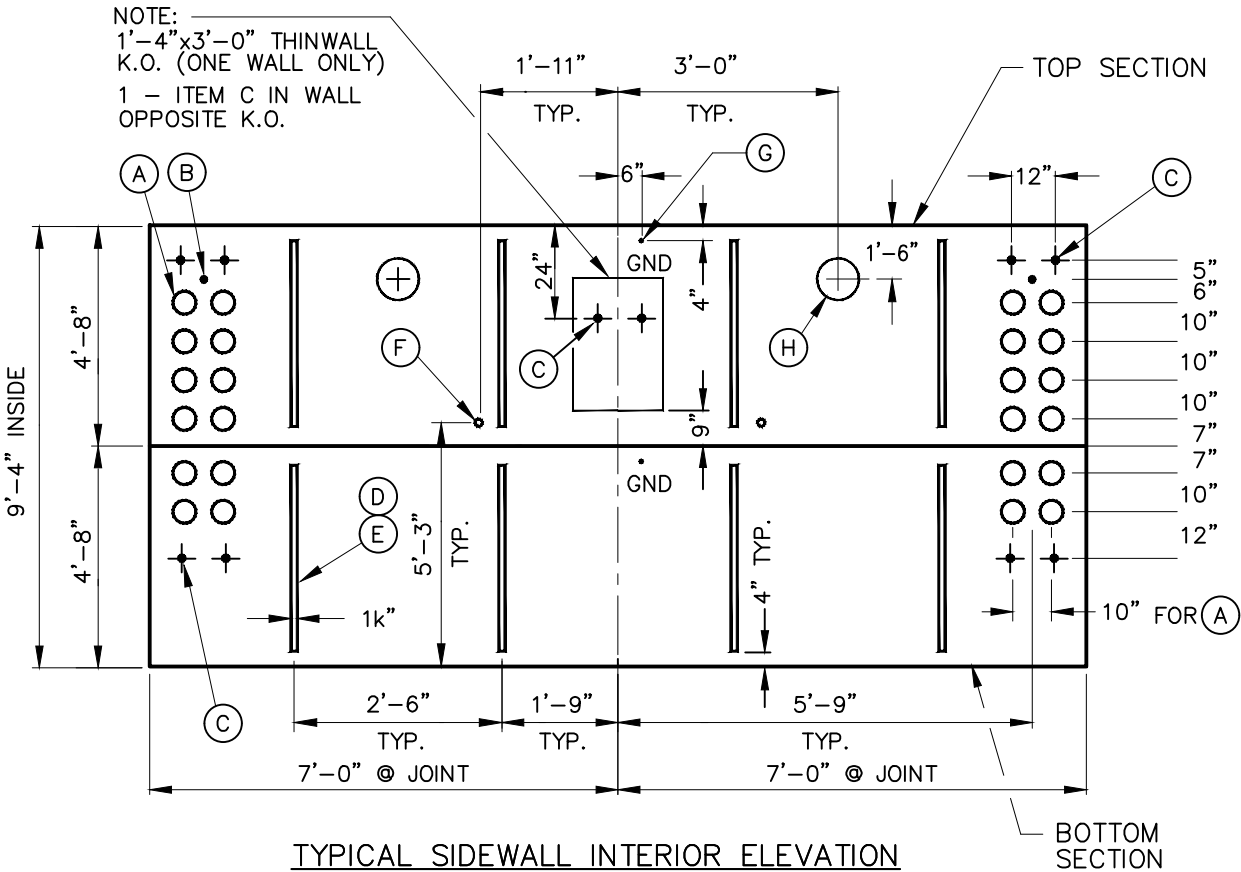
ADDED / REVISED TEXT

ADDED / REVISED MATERIAL

NEW SHEET

**DISTRIBUTION VAULT**  
**8' x 14' x 9'-4" DEEP TRAFFIC FLAT WALL**  
**WITH 5' x 8' OPENING**

REVISION NO. **2**  
ISSUE DATE: **01-13**  
SHEET **2** OF **6**  
CONSTRUCTION STANDARD:  
**CU 1600-3K**



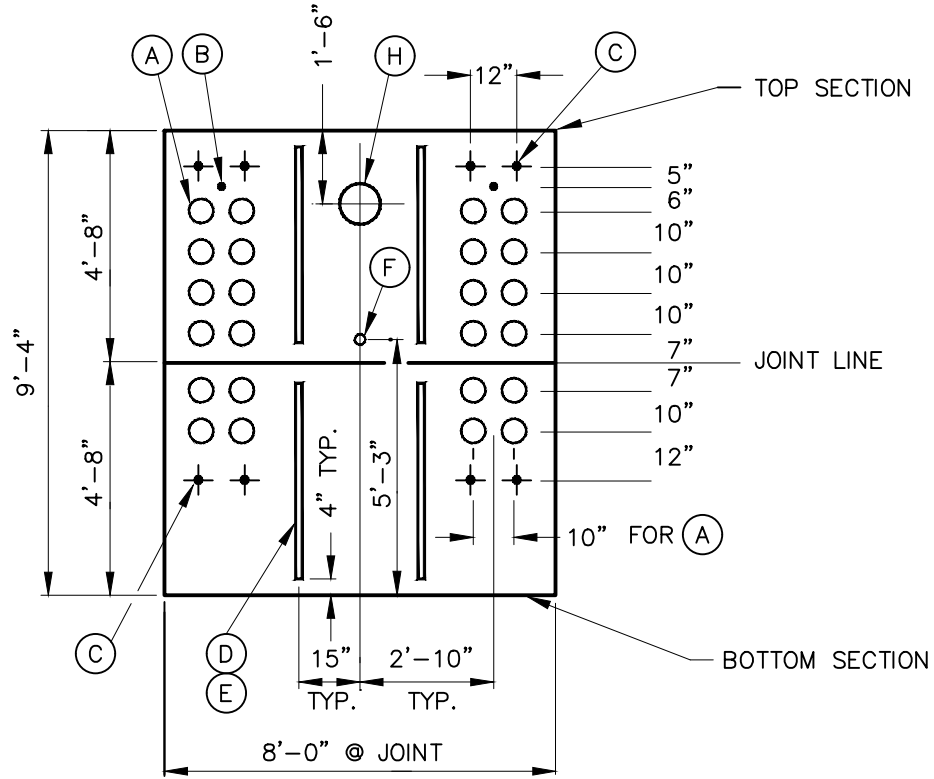
**ITEM (PER ENDWALL):**

- A. 6" DIAMETER PVC CONDUIT TERMINATORS - 24 REQD.
- B. 1" DIAMETER PVC GROUND WIRE SLEEVE - 2 REQD.
- C. 1" DIA. X 6" DOUBLE COIL INSERT, GALV., 10,000 LB. PULL CAPACITY - 2 REQD. (SEE NOTE ABOVE)
- D. 1 5/8" X 1 5/8" X 48" LG. UNISTRUT WITH SHORT SLOTS, GALV., WITH 1/2" DIA. STAINLESS STEEL FASTENERS - 24 REQD.
- E. 1/2" DIA. IMPERIAL I-5000 PLASTIC INSERT - 16 REQD.
- F. 5/8" DIA. X 3 3/8" NC THREADED INSERT 2000 LB. LOAD CAPACITY - 2 REQD.
- G. 1/2" DIA. BRONZE GROUND INSERT, GROUND TO REINFORCEMENT BARS. - 2 REQD.
- H. 10" DIA. PLASTIC VENT COUPLING - 2 REQD.

FILENAME: CU1600-3K REV2

|   |   |   |  |         |         |              |           |    |    |   |     |
|---|---|---|--|---------|---------|--------------|-----------|----|----|---|-----|
| <p><b>CITY OF ANAHEIM</b><br/>PUBLIC UTILITIES DEPARTMENT<br/>ELECTRICAL DIVISION<br/>T&amp;D CONSTRUCTION STANDARDS</p>  | REVISION KEYS:  | <p>ADDED / REVISED TEXT</p> <p>ADDED / REVISED MATERIAL</p> | NEW SHEET  |         |         |              |           |    |    |   |     |
|   | <p><b>DISTRIBUTION VAULT</b><br/><b>8' x 14' x 9'-4" DEEP TRAFFIC FLAT WALL</b><br/><b>WITH 5' x 8' OPENING</b></p> |   | <p>REVISION NO. <b>2</b></p> <p>ISSUE DATE: <b>01-13</b></p> <p>SHEET <b>3</b> OF <b>6</b></p> <p>CONSTRUCTION STANDARD:<br/><b>CU 1600-3K</b></p> |         |         |              |           |    |    |   |     |
| <p>APPROVALS</p> <table border="1" style="width: 100%; border-collapse: collapse;"> <tr> <td style="width: 25%;">PREP BY</td> <td style="width: 25%;">T&amp;D MGR</td> <td style="width: 25%;">SYS PLAN MGR</td> <td style="width: 25%;">SUB MAINT</td> </tr> <tr> <td style="text-align: center;">MH</td> <td style="text-align: center;">EB</td> <td style="text-align: center;">-</td> <td style="text-align: center;">CML</td> </tr> </table> |   |   |  | PREP BY | T&D MGR | SYS PLAN MGR | SUB MAINT | MH | EB | - | CML |
| PREP BY   | T&D MGR   | SYS PLAN MGR  | SUB MAINT  |         |         |              |           |    |    |   |     |
| MH  | EB  | -   | CML  |         |         |              |           |    |    |   |     |

FILENAME: CU1600-3K REV2



TYPICAL ENDWALL INTERIOR ELEVATION

**ITEM (PER ENDWALL):**

- A. 6" DIAMETER PVC CONDUIT TERMINATORS - 24 REQD.
- B. 1" DIAMETER PVC GROUND WIRE SLEEVE - 2 REQD.
- C. 1" DIA. X 6" DOUBLE COIL INSERT, GALV.,  
10,000 LB. PULL CAPACITY - 4 REQD.
- D. 1<sup>5</sup>/<sub>8</sub>" X 1<sup>5</sup>/<sub>8</sub>" X 48" LG. UNISTRUT WITH  
SHORT SLOTS, GALV., WITH 1/2" DIA.  
STAINLESS STEEL FASTENERS - 24 REQD.
- E. 1/2" DIA. IMPERIAL I-5000 PLASTIC INSERT - 8 REQD.
- F. 5/8" DIA. X 3<sup>3</sup>/<sub>8</sub>" NC THREADED INSERT  
2000 LB. LOAD CAPACITY - 1 REQD.
- H. 10" DIA. PLASTIC VENT COUPLING - 1 REQD.

**CITY OF ANAHEIM**  
PUBLIC UTILITIES DEPARTMENT  
ELECTRICAL DIVISION  
T&D CONSTRUCTION STANDARDS

REVISION KEYS:

ADDED / REVISED TEXT

ADDED / REVISED MATERIAL

NEW SHEET

**DISTRIBUTION VAULT**  
**8' x 14' x 9'-4" DEEP TRAFFIC FLAT WALL**  
**WITH 5' x 8' OPENING**

REVISION NO. **2**

ISSUE DATE: **01-13**

SHEET **4** OF **6**

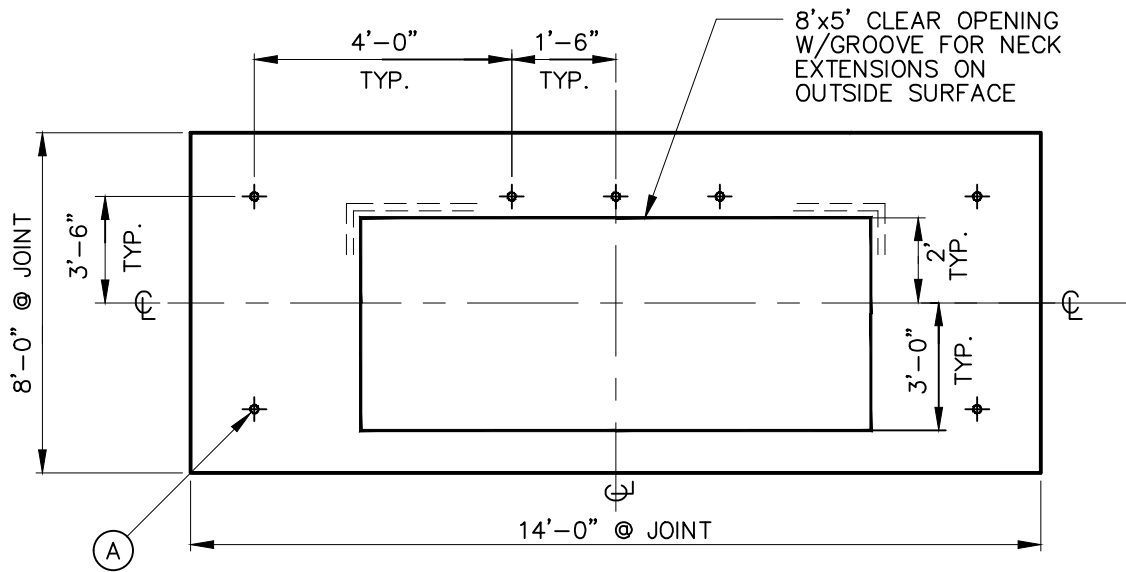
CONSTRUCTION STANDARD:

**CU 1600-3K**

APPROVALS

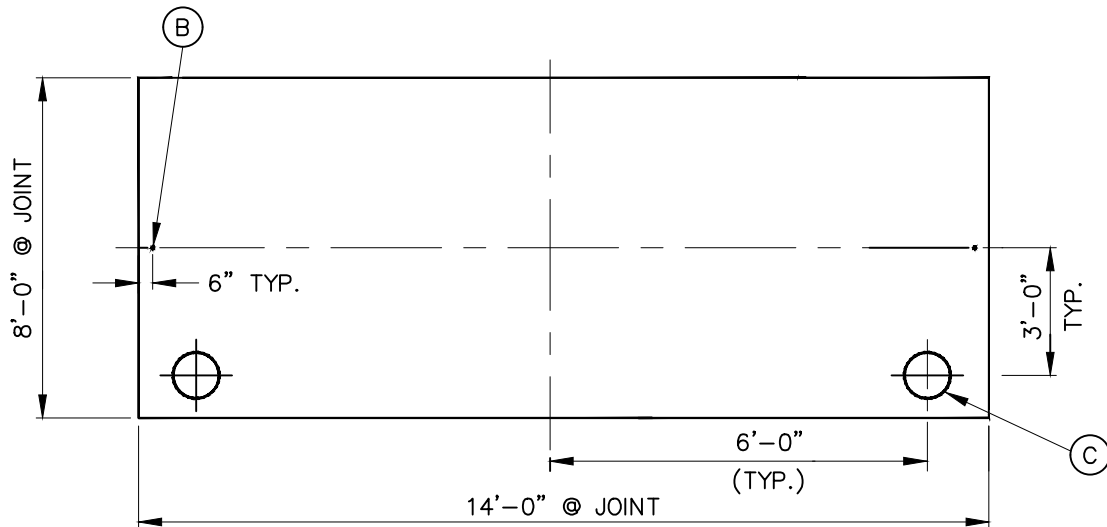
| PREP BY | T&D MGR | SYS PLN MGR | OPS MGR | SUB MAINT |
|---------|---------|-------------|---------|-----------|
| MH      | EB      | -           | CM      | -         |

FILENAME: CU1600-3K REV2



CEILING VIEW

TRAFFIC TYPE ONLY  
 (INSERTS (A) NOT REQUIRED FOR PARKWAY STYLE)



FLOOR VIEW

NOTES:

- A. 1" DIA. COIL INSERT, GALV. (SEE SHEET 1) - 9 REQD.
- B. 5/8" DIA COPPER CLAD GROUND ROD, WELD TO REINFORCEMENT & PROJECT 3" MIN. - 2 REQD.
- C. 13" DIA. SUMP, 5" DEEP W/PLATE RECESS. LOCATE AS SHOWN. - 2 REQD.

**CITY OF ANAHEIM**  
 PUBLIC UTILITIES DEPARTMENT  
 ELECTRICAL DIVISION  
 T&D CONSTRUCTION STANDARDS

REVISION KEYS:

ADDED / REVISED TEXT

ADDED / REVISED MATERIAL

NEW SHEET

**DISTRIBUTION VAULT**  
**8' x 14' x 9'-4" DEEP TRAFFIC FLAT WALL**  
**WITH 5' x 8' OPENING**

REVISION NO. **2**

ISSUE DATE: **01-13**

SHEET **5** OF **6**

CONSTRUCTION STANDARD:

**CU 1600-3K**

APPROVALS

| PREP BY | T&D MGR | OPS PLN MGR | OPS MGR | SUB MAINT |
|---------|---------|-------------|---------|-----------|
| MH      | EB      | -           | CM      | -         |

**GENERAL NOTES**

- A. THE STRUCTURE SHALL MEET THE APPLICABLE REQUIREMENTS OF THE LATEST REVISED EDITIONS OF THE FOLLOWING STANDARDS: ACI318, ASTM C-857 & AASHTO (WHICH INCLUDES AASHTO H-20 TRAFFIC WHEEL LOADING).
- B. FOR VAULT DESIGN PURPOSES, USE 3' GROUND WATER TABLE LEVEL.
- C. INTERIOR WALLS AND CEILING SHALL BE PAINTED WITH 2 COATS FLAT WHITE PAINT. (FRAZEE #410 LATEX OR APPROVED EQUAL).
- D. ALL JOINTS SHALL BE GASKETED AND WATERTIGHT.
- E. EXCAVATIONS PER CU 1600-4B, MINIMUM SIZE: 10'2" X 16'2" X DEPTH REQ'D - SEE MANUFACTURES SUGGESTED EXCAVATION SIZE.
- F. FOR REFERENCE SEE CU 1600-4D FOR TYPICAL VAULT SETTING DETAILS.
- G. PANEL OR TUNNEL STYLE REQUIRE APPROVAL BY ELECTRICAL ENGINEERING DIVISION.
- H. TRAFFIC STYLE TO INCLUDE 1 ACCESS LADDER.
- J. FOR VAULT VENTING, SEE CU 1700-6.
- K. FOR SUMP PUMP INSTALLATION, SEE CU 1700-5.
- L. FOR VAULT IDENTIFICATION, SEE C0 114-10.
- M. 1 5/8" X 1 5/8" X 48" GALV. UNISTRUT WITH SHORT SLOTS, SURFACE MOUNTED WITH 1/2" DIA. STAINLESS STEEL BOLTS AND WASHERS, FURNISHED AND INSTALLED BY VAULT MANUFACTURER.

**NOTES**

- 1. INSTALL VAULT WITH MINIMUM TWO NECK EXTENSION, 6" TO 12" THICK EACH.
- 2. INSTALL CUSTOM MADE NECK EXTENSION (6" TO 12" HIGH) IF ADJUSTMENT TO VAULT-TOP ELEVATION IS REQUIRED.
- 3. THE GRADE RINGS (NECK EXTENSION) SHOULD HAVE 6000 PSI BREAK TEST APPROVAL PRIOR TO SHIPMENT.
- 4. DRY PACK SHOULD BE WITH 6000 PSI COMPRESSIVE STRENGTH AND APPLIED TO NOT MORE THAN 3" THICK AND SUPPORTED BY STAINLESS STEEL WASHERS AT EVERY 12". AFTER APPLYING DRY PACK, VAULT SHOULD NOT BE EXPOSED TO TRAFFIC FOR 24 HOURS.
- 5. THIS STANDARD IS DEVELOPED BY USING MANUFACTURER INFORMATION. THE CONTRACTOR/INSTALLER TO CONTACT MANUFACTURER AND FOLLOW MANUFACTURER INSTRUCTION FOR 'PROPER EXCAVATION' SETTING AND INSTALLATION OF THIS VAULT.

FILENAME: CU1600-3K REV2

|  |         |  |                      |                          |  |
|--|---------|--|----------------------|--------------------------|--|
| <b>CITY OF ANAHEIM</b><br>PUBLIC UTILITIES DEPARTMENT<br>ELECTRICAL DIVISION<br>T&D CONSTRUCTION STANDARDS |         | REVISION KEYS:   | ADDED / REVISED TEXT | ADDED / REVISED MATERIAL | NEW SHEET  |
|  |         | <b>DISTRIBUTION VAULT</b><br><b>8' x 14' x 9'-4" DEEP TRAFFIC FLAT WALL</b><br><b>WITH 5' x 8' OPENING</b> |                      |                          | REVISION NO. <b>2</b><br>ISSUE DATE: <b>01-13</b><br>SHEET <b>6</b> OF <b>6</b><br>CONSTRUCTION STANDARD:<br><b>CU 1600-3K</b> |
| APPROVALS  |         |  |                      |                          |  |
| PREP BY  | T&D MGR | SYS PLN MGR  | OPS MGR              | SUB MAINT                |  |
| MH   | EB      | -  | CML                  | -                        |  |