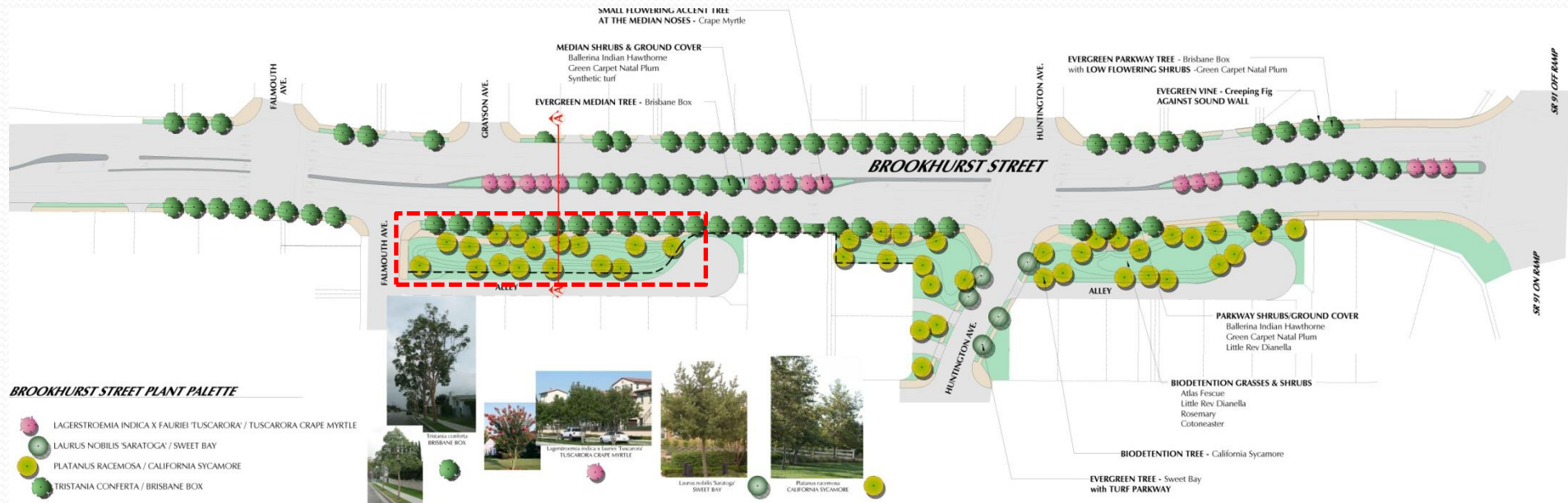
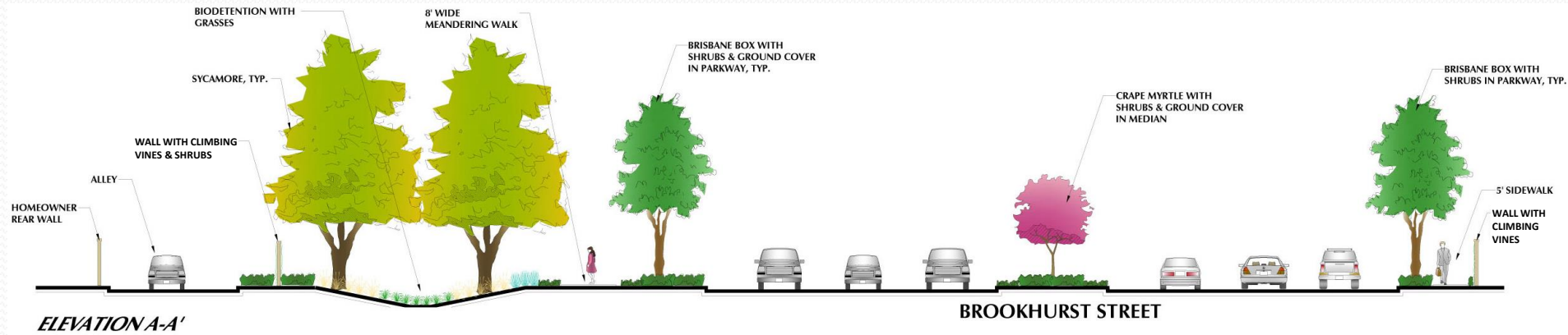


# Proposed Landscape



## BROOKHURST STREET PLANT PALETTE

-  LAGERSTROEMIA INDICA X FAURIEI / TUSCARORA / TUSCARORA CRAPE MYRTLE
-  LAURUS NOBILIS 'SARATOGA' / SWEET BAY
-  PLATANUS RACEMOSA / CALIFORNIA SYCAMORE
-  TRISTANIA CONFERTA / BRISBANE BOX

