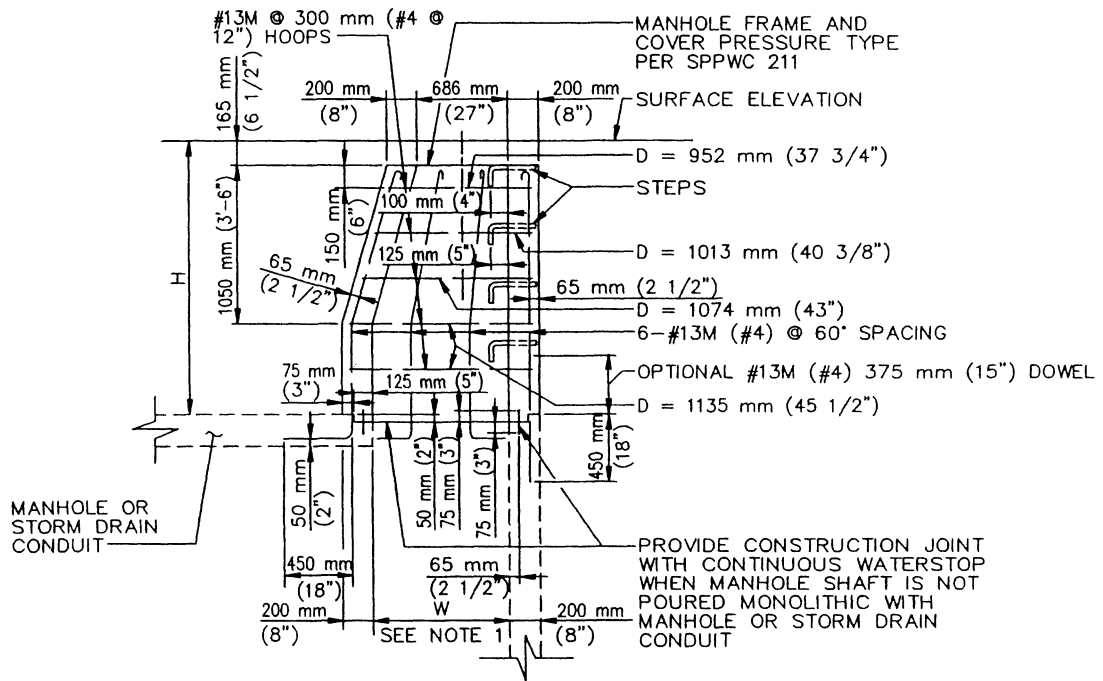
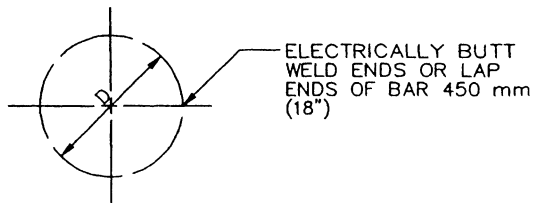


PLAN



SECTION A-A



#13M (#4) HOOP BARS

STANDARD PLANS FOR PUBLIC WORKS CONSTRUCTION

PROMULGATED BY THE
 PUBLIC WORKS STANDARDS INC.
 GREENBOOK COMMITTEE
 1992
 REV. 1996

**PRESSURE MANHOLE SHAFT
 WITH ECCENTRIC REDUCER**

USE WITH STANDARD SPECIFICATIONS FOR PUBLIC WORKS CONSTRUCTION

STANDARD PLAN METRIC

328-1

SHEET 1 OF 2

NOTES

1. IF H IS LESS THAN 450 mm (18"), W=675 mm (27")
IF H IS BETWEEN 450 mm (18") AND 750 mm (2'-6"), W=750 mm (2'-6").
IF H IS 750 mm (2'-6") OR MORE, W=900 mm (3'-0").
IF H IS MORE THAN 1215 mm (4'-0 1/2"), BRING WALL VERTICALLY TO
1215 mm (4'-0 1/2") BELOW SURFACE AND TAPER FROM 900 mm (3'-0")
TO 675 mm (27") AS SHOWN.
2. THIS STRUCTURE SHALL BE USED WITH MANHOLE FRAME AND COVER
PRESSURE TYPE, SPPWC 211. IT MAY BE USED FOR HYDROSTATIC
HEADS UP TO 7.5 m (25') ABOVE THE STEEL PLATE.
3. THE VERTICAL SIDE OF THE MANHOLE SHAFT AND THE ECCENTRIC
REDUCER SHALL BE LOCATED ABOVE AND IN LINE WITH THE SIDE
OF THE STORM DRAIN CONDUIT.
4. REINFORCEMENT SHALL CONFORM TO ASTM A 615M, GRADE 300 (ASTM
A 615, GRADE 40), AND SHALL TERMINATE 40 mm (1 1/2") CLEAR OF
CONCRETE SURFACES UNLESS OTHERWISE SHOWN.
5. STEPS SHALL CONFORM TO SPPWC 635 OR 636. THE TOP
STEP SHALL BE PLACED DIRECTLY BENEATH THE MANHOLE FRAME.
UNLESS OTHERWISE SHOWN, STEPS SHALL BE UNIFORMLY SPACED
350 mm (14") TO 375 mm (15") OC.
6. SEE CONTRACT SPECIFICATIONS FOR PHYSICAL REQUIREMENTS OF
WATERSTOP.
7. THE FOLLOWING SPPWC ARE INCORPORATED HEREIN:

211 MANHOLE FRAME AND COVER PRESSURE TYPE
635 STEEL STEP
636 POLYPROPYLENE PLASTIC STEP

STANDARD PLANS FOR PUBLIC WORKS CONSTRUCTION

**PRESSURE MANHOLE SHAFT
WITH ECCENTRIC REDUCER**

STANDARD PLAN
METRIC

328-1

SHEET 2 OF 2