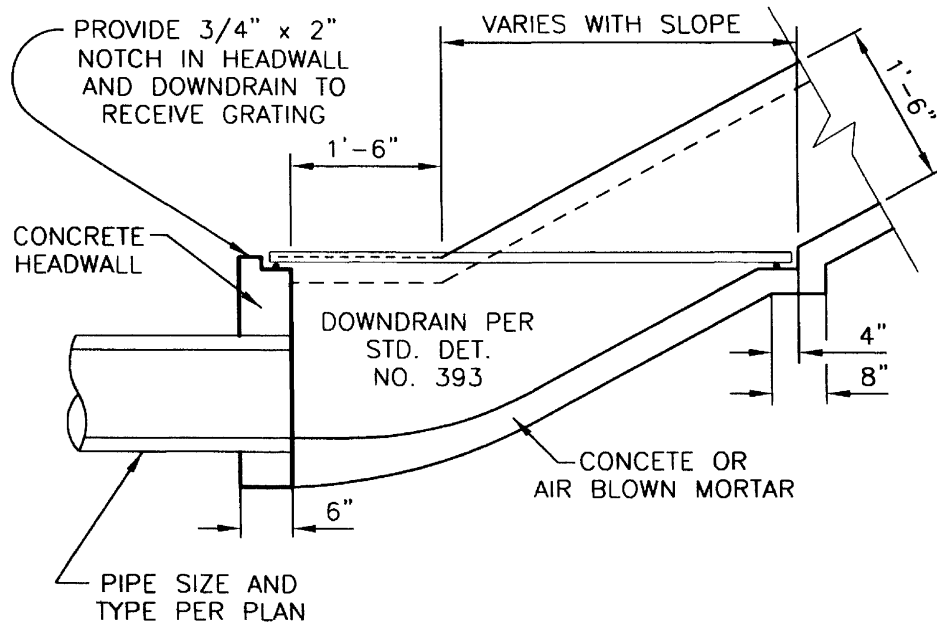


PLAN VIEW

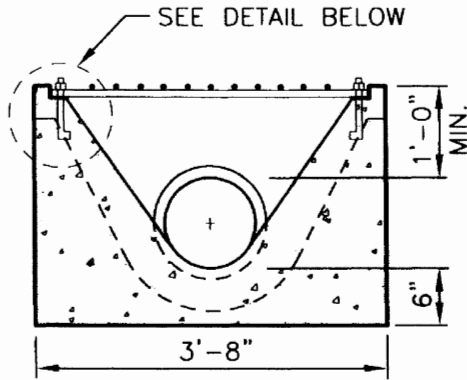
N.T.S.



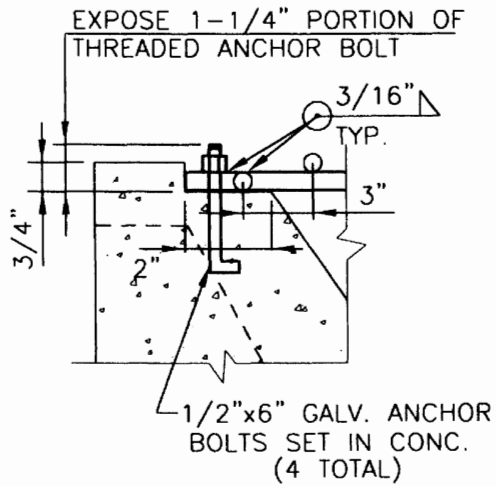
SECTION A-A

N.T.S.

REC'D	<i>[Signature]</i>	11/17/04	APP.	<i>[Signature]</i>	11-18-04			
	DEPUTY CITY ENGINEER	DATE		D.P.W. / CITY ENGINEER	DATE	REVISED	BY	
CITY OF ANAHEIM DEPARTMENT OF PUBLIC WORKS						STANDARD DETAIL NO.		
DOWN DRAIN TO PIPE TRANSITION						395		
USE WITH STANDARD SPECIFICATIONS FOR PUBLIC WORKS CONSTRUCTION						SHEET 1 OF 3		




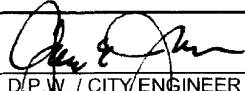
SECTION B-B
N.T.S.



REC'D	<i>[Signature]</i>	11/17/04	APP	<i>[Signature]</i>	11-18-04		
	DEPUTY CITY ENGINEER	DATE		D.P.W. / CITY ENGINEER	DATE	REVISED	BY
CITY OF ANAHEIM DEPARTMENT OF PUBLIC WORKS							
DOWN DRAIN TO PIPE TRANSITION						STANDARD DETAIL NO. 395	
USE WITH STANDARD SPECIFICATIONS FOR PUBLIC WORKS CONSTRUCTION						SHEET 2 OF 3	

NOTES:

1. DOWNDRAIN TO PIPE TRANSITION SHALL NOT BE USED WITHIN PUBLIC RIGHT-OF-WAY.
2. AFTER TRANSITION, PIPE SHALL OUTLET TO PARKWAY CULVERT, BACK OR SIDE OF CATCH BASIN, DRAINAGE SYSTEM OR RIPRAP OUTLET.
3. MATERIAL FOR CONSTRUCTION OF DOWNDRAIN SHALL BE CONCRETE OR AIR-BLOWN MOTAR REINFORCED WITH 6"x6"-W1.4xW1.4 WELDED WIRE FABRIC.
4. GROUND SHALL BE PRE-WETTED TO THE SATISFACTION OF THE CITY ENGINEER PRIOR TO PLACEMENT OF CONCRETE.
5. GRATE SHALL BE HOT DIP GALVANIZED AFTER FABRICATION.

REC'D	 DEPUTY CITY ENGINEER	11/17/04 DATE	APP.	 D.P.W. / CITY ENGINEER	11-18-04 DATE				
CITY OF ANAHEIM DEPARTMENT OF PUBLIC WORKS									
DOWN DRAIN TO PIPE TRANSITION							STANDARD DETAIL NO.		
USE WITH STANDARD SPECIFICATIONS FOR PUBLIC WORKS CONSTRUCTION							395		
							SHEET 3 OF 3		