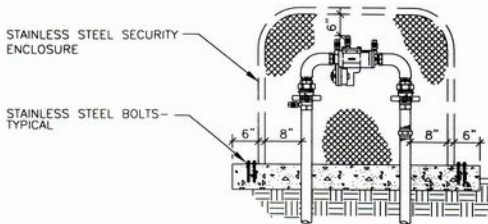




BFP ASSEMBLY

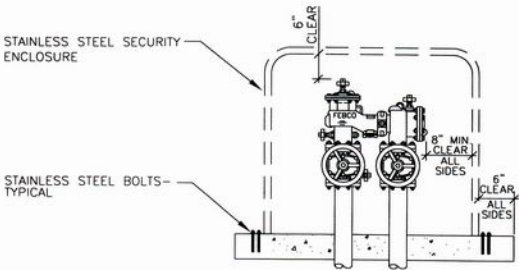
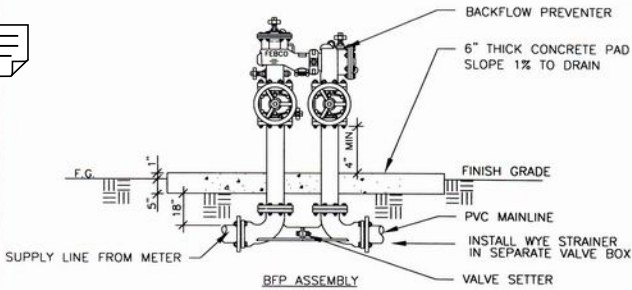


BFP ENCLOSURE

NOTES:


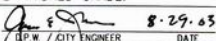
1. ALL FITTINGS, UNIONS AND RISERS TO BE RED BRASS.
2. P.C.C. PAD SIZE SHALL BE SUFFICIENT TO ACCOMMODATE BACKFLOW PREVENTER ENCLOSURE.
3. CONCRETE SHALL BE 310-C-17 (520-C-2500)
4. THE BACKFLOW PREVENTER DEVICES AND INSTALLATIONS SHALL BE APPROVED BY THE LOCAL DEPARTMENT OF HEALTH SERVICES AND WATER AGENCY.
5. VALVE ASSEMBLIES MAY HAVE SCREWED FITTINGS OR FLANGED FITTINGS.
6. APPROVED TEFLON TAPE, 12mm (1/2") WIDE, SHALL BE USED ON ALL THREADED CONNECTIONS.
7. DISSIMILAR METALS SHALL BE SEPARATED BY AN APPROVED DIELECTRIC COUPLING.
8. PLASTIC PIPE SHALL NOT BE USED ABOVE FINISHED GRADE.

REC'D		8/2/03	DATE	APP		8.29.03	DATE				
	DEPUTY CITY ENGINEER				CITY ENGINEER			REVISED			BY
CITY OF ANAHEIM DEPARTMENT OF PUBLIC WORKS											
BACKFLOW PREVENTER ASSEMBLY										STANDARD DETAIL NO.	
SIZE 2" OR SMALLER W/ ENCLOSURE										512	
USE WITH STANDARD SPECIFICATIONS FOR PUBLIC WORKS CONSTRUCTION										SHEET 1 OF 2	



NOTES:

1. ALL FITTINGS AND RISERS TO BE RED BRASS.
2. P.C.C. PAD SIZE SHALL BE SUFFICIENT TO ACCOMMODATE BACKFLOW PREVENTER ENCLOSURE.
3. CONCRETE SHALL BE 310-C-17 (520-C-2500)
4. THE BACKFLOW PREVENTER DEVICES AND INSTALLATIONS SHALL BE APPROVED BY THE LOCAL DEPARTMENT OF HEALTH SERVICES AND WATER AGENCY.
5. VALVE ASSEMBLIES MAY HAVE SCREWED FITTINGS OR FLANGED FITTINGS.
6. APPROVED TEFLON TAPE, 12mm (1/2") WIDE, SHALL BE USED ON ALL THREADED CONNECTIONS.
7. DISSIMILAR METALS SHALL BE SEPARATED BY AN APPROVED DIELECTRIC COUPLING.
8. PLASTIC PIPE SHALL NOT BE USED ABOVE FINISHED GRADE.

REC'D		DATE	8/24/03	APP		DATE	8-29-03		
	DEPUTY CITY ENGINEER				CITY ENGINEER			REVISED	BY
CITY OF ANAHEIM DEPARTMENT OF PUBLIC WORKS									
BACKFLOW PREVENTER ASSEMBLY SIZE 2 1/2" OR GREATER W/ ENCLOSURE								STANDARD PLAN	
								512	
USE WITH STANDARD SPECIFICATIONS FOR PUBLIC WORKS CONSTRUCTION									SHEET 2 OF 2